

# ASSEMBLY MANUAL

## DOG KENNEL LABRADOR Model



## INTRODUCTION

This assembly manual reflects the technique at the time of purchase and the specifications in force at the current date of edition; it contains the information necessary for correct installation, cleaning and disposal of the product at the end of its life.

**FERRANTI S.R.L.** reserves the right to make modifications, changes or improvements to the manual or to the product at any time and without notice.

**Use only the original mounting components provided.**



The manufacturer is not liable for damage to property, persons and animals caused by accidents due to failure to comply with the instructions in this assembly manual.

**The images are purely indicative and do not constitute a commitment for the manufacturer and/or the Distributor.**

Any proposal by the Customer regarding improvements to be made to the product will be welcomed by **FERRANTI S.R.L.**, which will evaluate their implementation.

### INTENDED USE (PERMITTED USE).

The product in question has been designed for the **housing and keeping of animals**.

The inner dog house is suitable for 20-45 kg, 50-70 cm **large dog breeds** (such as: German Shepherd, Dalmatian, Female Dobermann, English Setter) and for 18-40 kg, 50-63 cm **medium-sized dog breeds** (such as: Golden retriever, Boxer, Collie, Labrador, Border Collie).

### IMPROPER USE (NOT PERMITTED).

Any use other than the permitted one is to be considered "**improper use**"; the Manufacturer therefore declines all responsibility for any damage caused to property, animals and/or persons.

## GENERAL DESCRIPTION

The dog kennel, mod. Labrador consists of:

- Hot-dip galvanized steel structure, buffered with panels in marine plywood treated with impregnating agent, 1.5 cm thick.
- Inner wooden dog house (from 120x65x82(\*)x59(\*\*), with "anti-bite" entrance from 30x50), that can be inspected by lifting the roof and complete with bench raised from the ground, removable and washable.  
(\* Front Height/ (\*\*) Rear Height
- Front panel of hot galvanized steel, bars diameter of 1.2 cm and distance of 6.5 (in mesh on request); complete with gates with lock holder.
- Insulated panel cover, 3.5 cm thick, framed with sheet metal profiles.
- Protrusion cover 11 cm on the sides and on the back, while about 3.5 cm on the front.
- By installing the boxes in series, that is, one attached to the other, there is a saving compared to the standard model for which we recommend you request a quote by email specifying the structure that you intend to design.
- On request, with a front fence that can be extended at will with galvanized mesh or bar panels.

**FERRANTI**  
cucce e box per animali

**Dear Customer,**

Thank you for purchasing a **FERRANTI** product.



OBLIGATION

**Please consult this assembly manual carefully before proceeding with any operation on the product.**

## OVERALL DIMENSIONS

	125 x 240	200 x 240
External (WxDxH)	125 x 240 x 175 cm	206 x 240 x 175 cm
Interior (WxDxH)	120 x 235 x 170 cm	201 x 235 x 170 cm

W = Width / D = Depth / H = Height

## UNPACKING

- ▶ Place the structure near the final installation site and on a stable and horizontal area of the ground.
- ▶ Remove the packaging materials taking care not to damage the components.



ATTENTION

**DANGER!** Keep out of the reach of children and animals.  
**Packaging materials (plastic bags, straps, etc.) can be a source of danger to health (e.g. suffocation).**

- ▶ Divide the packaging materials according to their type and dispose of them in accordance with the provisions in force regarding the disposal of waste.



**All the packaging materials are recyclable and must be disposed of in accordance with the local legislation.**

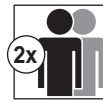
## STANDARD EQUIPMENT

				1	No. 10 screws M8x30
				2	No. 6 screws M8x50
				3	No. 2 hooks M6x150
				4	No. 2 shaped hooks M6x150
				5	No. 4 self-tapping screws 4.8x16
				6	No. 16 M8 nuts
				7	No. 4 M6 nuts
				8	N. 4+4 rhomboidal washers
				9	N. 2 flat washers

## EXTENSION OF THE FENCE (optional)

			10	No. 4 "U" brackets
			11	Screws M8x40
			12	No. 6 screws M8x60
			13	Nuts M8

## INSTALLATION



The assembly operations must be performed by at least two persons.

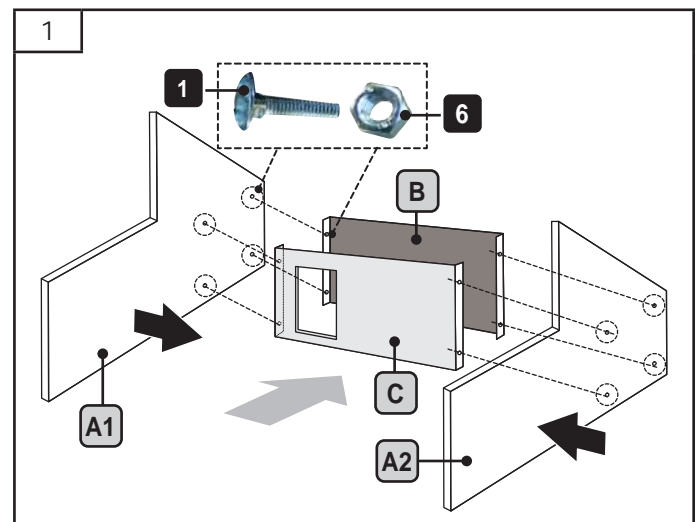


For the assembly of the products, the use of Personal Protective Equipment is always recommended: work gloves to protect the hands from the danger of being cut.

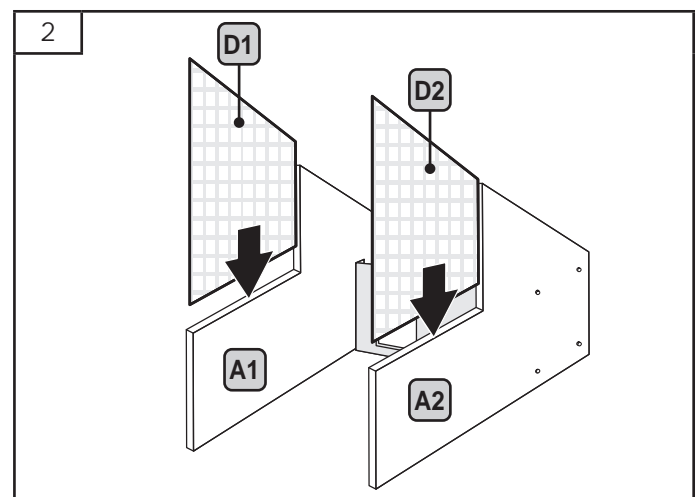
## RECOMMENDED TOOLS

Slotted Screwdriver - Cross Head Screwdriver - Wrench - Cutter.  
**Note:** Tighten the screws completely only at the end and after checking the square of the structure.

- 1) Assembling the sides (A1 and A2)
  - ▶ Remove the **screws (1)** and **nuts (6)** from the kit supplied.
  - Connect the **side wall (A1)** to the **rear wall (B)** and the **front wall (C)** using the screws and nuts.
  - Proceed in the same way for the **side (A2)**.



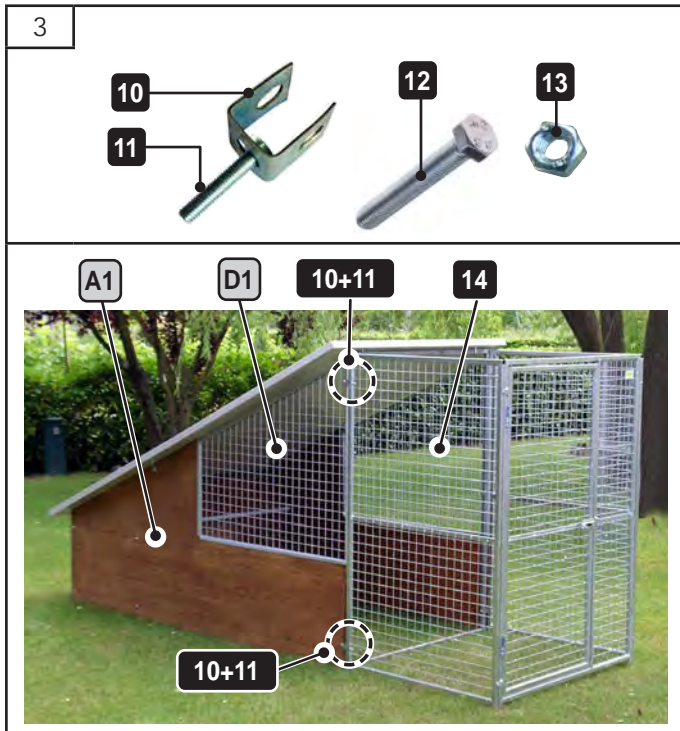
- 2) Assembling the mesh panels (D1 and D2)
  - Recess the **mesh panel (D1)** in the **side (A1)**.
  - Do the same for the **mesh panel (D2)**.



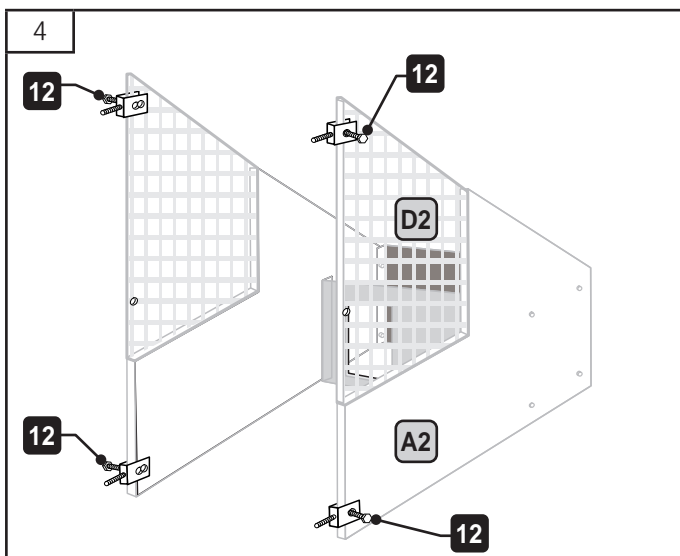
3) Extension of the fence (optional)

In the event that the extension of the fence occurs after the installation of the box, remove **gate E1** (see point 4).

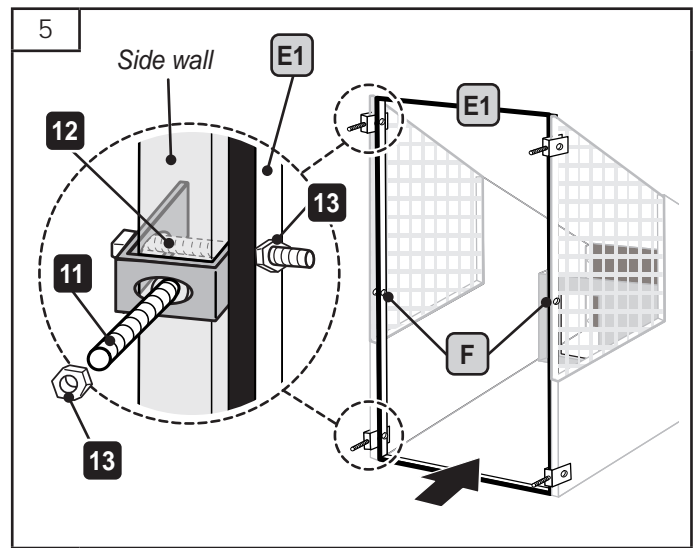
- ▶ Take the “U” brackets (10), the screws (11), the screws (12), and the nuts (13) from the kit supplied.
- Position the “U” brackets (10) together with the screw (11) at the upper hole of the mesh wall (D1) and the lower hole of the side wall (A1) (Fig. 3).



- Tighten the screws (12) enough to hold the brackets to the structure.
- Do the same for the mesh part (D2) and the side wall (A2).

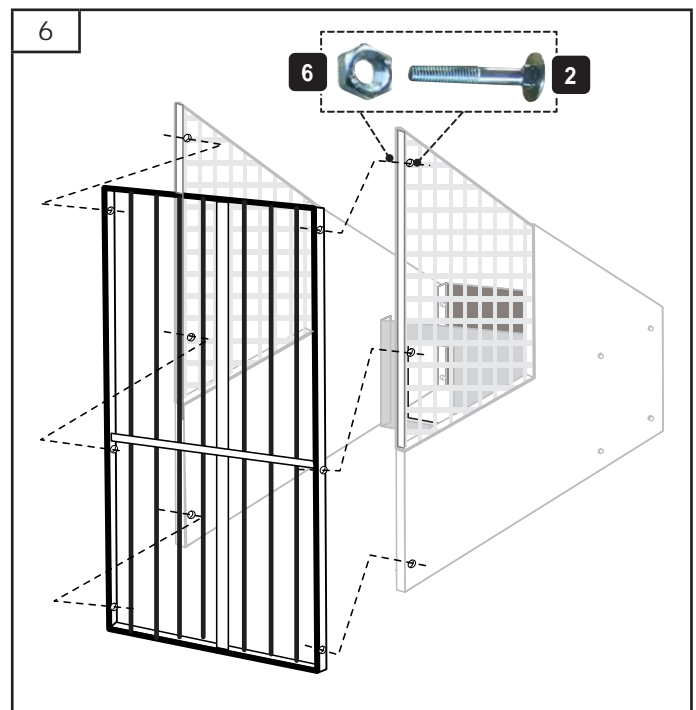


- Recess the **frame (E1)** inside the edges of the side walls (Fig. 4) making the holes prepared coincide with those of the brackets.
- Screw the **screws (12)** and the **nuts (13)** so as to fix the frame to the brackets.
- In the same way, proceed in the **central holes (F)**.
- Assembling the mesh walls (ref. 14 - Fig. 3):
  - secure the first mesh in contact with the structure using the **screws (11)** and stop with the **nuts (13)**;
  - proceed with the assembly of the additional mesh walls (depending on the equipment) fixing them with the **screws (12)** and **nuts (13)**.



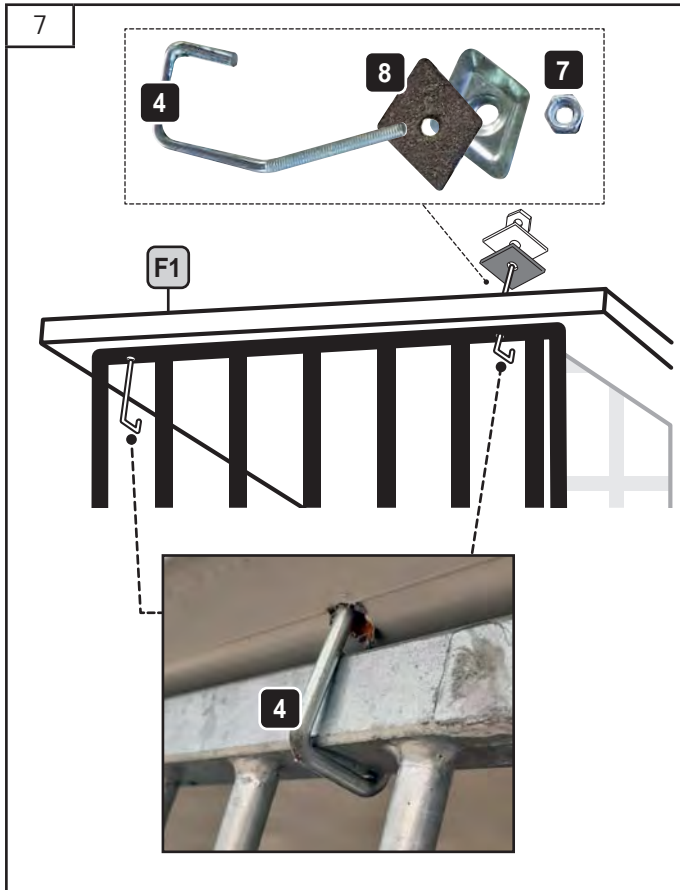
4) Assembling the gate (E1)

- ▶ Remove the **screws (2)** and **nuts (6)** from the kit supplied.
- Secure the gate to the structure using the holes provided.

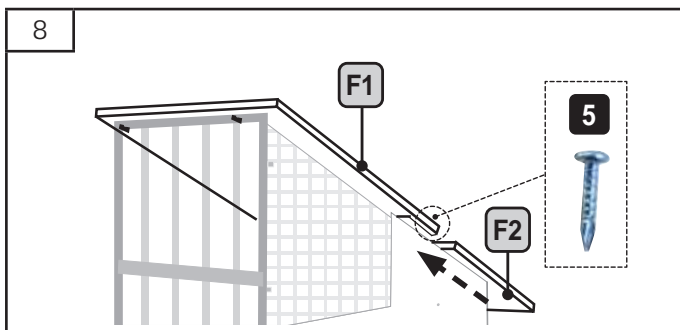


5) Assembling the roof (F1 - F2)

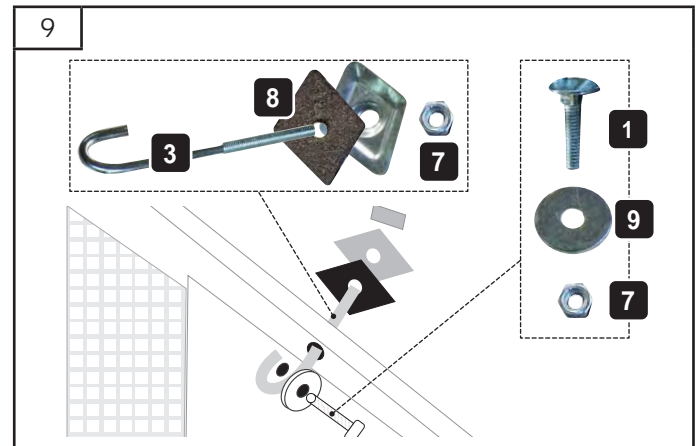
- ▶ Take the **hooks (4)**, **nuts (7)**, **rhomboidal washers (8)**, **flat washers (9)** + gasket and **self-tapping screws (5)** from the kit supplied.
- Secure the **roof (F1- large part)** to the gate with the appropriate **hooks (4)**; insert the **rhomboidal washers (8)**, the **flat washers (9)**, the **nuts (7)** and the gasket.



- Slide the other part of the **roof (F2)** until it is recessed under the **roof (F1)**; secure both roofs with the **self-tapping screws (5)**.

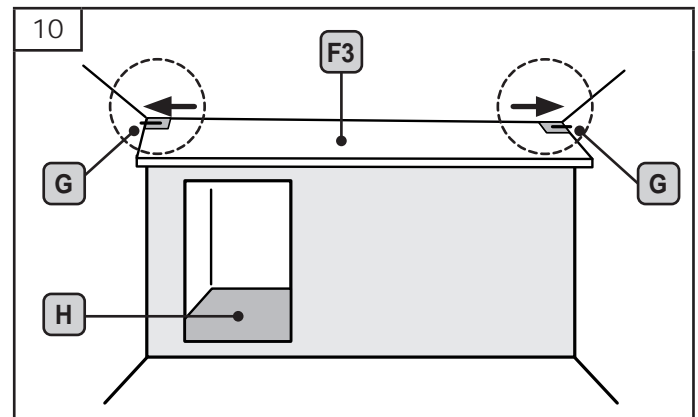


- In the holes provided on the side walls, insert the **screws (1)** with the **flat washer (9)**. Secure with the **nuts (7)**.
- Attach the reinforcement **hooks (3)** to the **screws (1)**, then secure with the **gaskets (8)** and **nuts (7)**.



6) Assembling the inner roof (F3) and the bench

- Enter the inside of the box and install the internal **roof (F3)** by securing it to the structure with the appropriate **hooks (G)**.
- Insert the **wooden bench (H)**.



7) Finishes

- Remove the transparent protective plastic from the insulated panels (use a cutter).
- It is advisable to apply silicone to the roof joints.

CLEANING



**Clean the structure periodically (or in the presence of obvious dirt).** Sanitise, disinfect and clean the inside of the kennel with suitable products that are not harmful to the health of the person and the animal.

SCRAPPING AND DISPOSAL



The materials that compose the structure must be disposed of according to the type and procedures provided for by the legislation in force in the country of installation.

For further detailed information on the disposal of this product, contact the municipal office, the local waste disposal service or the store where it was purchased.